

ALUMINIUM SLIDING DOORS QUICK INSTALLATION GUIDE

Before You Start

Read this guide all the way through before starting.

Check the size of the opening against the Sliding Door outer frame to ensure a good fit.

Ensure you have all components available - cills, end caps, gaskets, packers etc

It is vital to ensure that the Sliding Door is fitted level, plumb and square and correctly. Failure to do this will mean the doors will not slide correctly and the locking mechanism might not work.

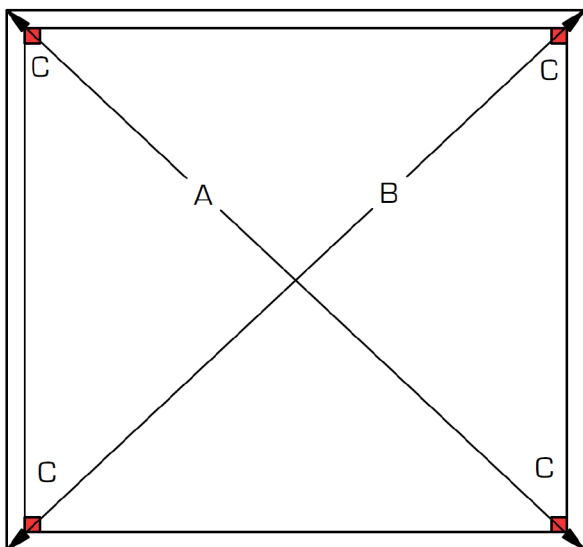
1

Check that the cill end caps are fixed and sealed in place. Set the cill in the required position. Make sure that the cill is absolutely level.

2

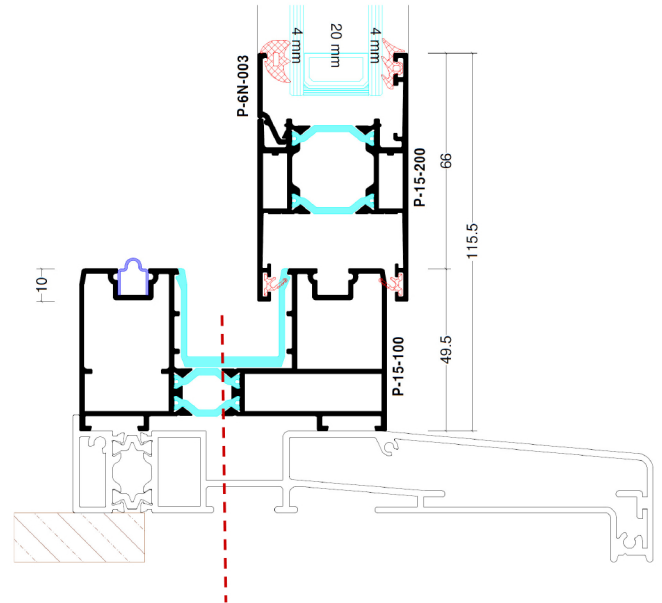
The Sliding Door can now be positioned on the cill and in the opening.

Use packers in the corners to hold the Sliding Door in place and to ensure it remains level, plumb and square. To check the outer frame is square measure the diagonals. There should be no more than 1 to 2mm difference between A and B



3

Screw Fix through the thermal break (do not screw through the drain holes at the bottom).



4

The first fixing must always occur within 150mm of each corner and at no more than 600mm centres, Do not over tighten fixings. Packers should be used around the fixings to prevent distortion of the frame. Foam can be used but it is not an alternative to screw fixing and care should be taken not to come into contact with the painted finish.

Fix the outer frame into brickwork up both sides. The fixed sash will be supplied temporarily fixed so that it can be slid out of the way to allow access to the thermal break and then repositioned and permanently fixed.

Fix the head of the outer frame into brickwork or steel above.

Double check the diagonals to make sure they are still equal.

Check that all leaves are working correctly and running smoothly .

5

Ensure all four corners have glass packers, then lift the glass into place and fit extra packers where required to take up any slack. Refit the glazing beads.

Fit the push in gasket. To ease fitting, the gasket should be dipped in warm soapy water, particularly if its cold. Over stack the gaskets to allow for a small amount of shrinkage. The gaskets are designed to be a tight fit and a glazing shovel is recommended.

6

Install the 'Drip Bar' length of aluminium to the top external face. Apply a bead of silicone to the drip bar prior to screw fixing to the face of the door with self tapping screws (Not Supplied).



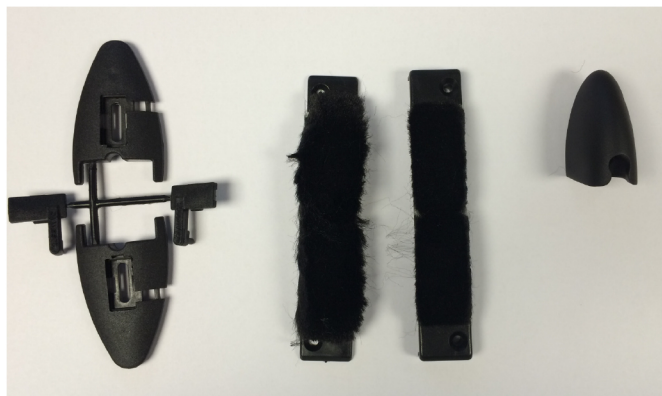
7

Fit the additional items if these have not been factory fitted.

Screw the draft sealing Brushes into the top and bottom thermal breaks where the leafs interlock to form a barrier between outside and inside. Fit the longer brush to the top and the shorter to the bottom.

Clip the Anti-lift cap into the prepared holes in the top and bottom of the sash.

Install the buffer stops, to suit the required fully opened position, by screw fixing into the thermal break. Where required on triple track Sliding Doors one of the buffers stops should also be fitted to the second sash to prevent the handle of the 1st sash hitting the second sash.



Anti-lift Cap

Brushes

Buffer



8

Install the aluminium cover plates by clipping in to place around the inside. The cover plates are only used on double track sliding doors not on triple track.

9

Silicone Seal internally and externally.

Your Aluminium Sliding Door is now installed correctly and will operate smoothly for years to come.